



Photo Ace

PHOTO ACE USER MANUAL

[PHOTO ACE VERSION 1.0]

Mobile Solutions

TecAce Software

1. INTRODUCTION

2. FEATURES

1. Organizing Photos

2. Edit Photos

3. Viewing Photos

4. Slideshow

3. SUPPORT

Contents

PHOTO ACE

USER MANUAL

[PHOTO ACE VERSION 1.1]

1

Introduction

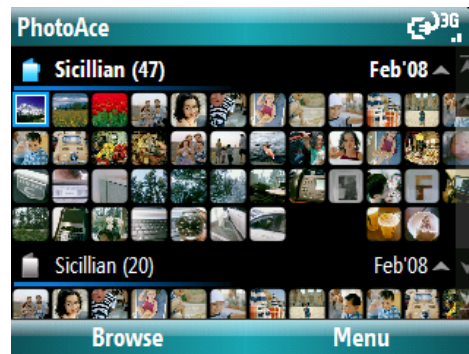
USER MANUAL

[PHOTO ACE VERSION 1.0]

Photo Slides is a program that manages Photo Images in Windows Mobile device. It displays Photo files (.JPG) that captured by camera.

Photo Slides provides basic edit features to Album Management and SlideShow with simple steps.

User can enjoy a unique slide show with background music.



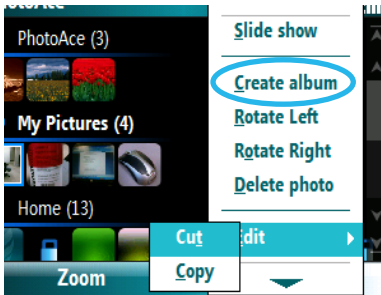
2

1. Organizing Photos

USER MANUAL

[PHOTO ACE VERSION 1.0]

The key feature of PhotoAce is allowing users create and organize photo albums.



Create Album

1. From the thumbnail view, press Menu.
2. Select Create Album.
3. Type in desired album name.
4. Select OK to confirm.

Note: Show Albums feature must be turned on to be able to create albums.

Delete Album

1. From the thumbnail view, select desired album.
2. Press and Hold Navigation Key.
3. Scroll down and select Delete Album.
4. Confirm deletion.

Note: If a photo is shared by album and folder, deleting the album will not delete the photo from the folder.

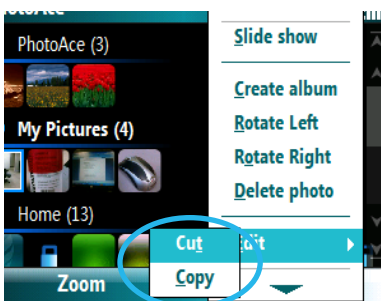
Rename Album

1. From the thumbnail view, select desired album.
2. Press and Hold Enter Navigation Key.
3. Scroll down and select Rename Album.
4. Type in new album name.
5. Select OK to confirm.

Copy/Cut Photos into Album

1. From the thumbnail view, select the photo you would like add.
2. Scroll down to Edit and select Copy/Cut.
3. Select desire photo album to add photos and select Menu.
4. Scroll down to Edit and select Paste.

Note: Cutting photos is only valid when transferring photos from album to album.

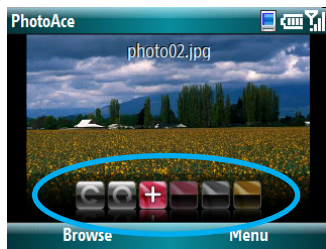


2

2. Edit Photos

USER MANUAL

[PHOTO ACE VERSION 1.0]



PhotoAce offers a variety of editing tools from rotate images to adding effects.

Rotate Photos

1. From the thumbnail or album view, press Menu.
2. Select Rotate Left/Right.

Delete Photos

1. From the thumbnail view, press Menu.
2. Select Delete Photo.
3. Confirm deletion.

Note: With photo selected from the thumbnail view, deleting and rotating photos function is also accessible by holding down Enter Navigation Key.

Effects

Black & White Effect



1. From the thumbnail view, Select the photo you would like edit.
2. Press Menu and select Effect from the list.
3. Select Black & White.

Sepia Effect



1. From the thumbnail view, Select the photo you would like edit.
2. Press Menu and select Effect from the list.
3. Select Sepia.

Photo Enhancement



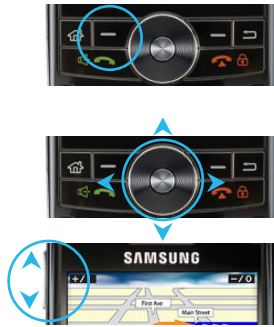
1. From the thumbnail view, Press and Select the photo you would like edit.
2. Press Menu and select Effect from the list.
3. Select Enhance.

Note: Effects menu is also accessible from the photo view by pressing Up/Down on the full screen photo page.

There are two modes to view photos with PhotoAce.

Viewing with Browse Mode

Browse Mode lets you freely move the select cursor to view photos. From the thumbnail view, press **Browse** to view as Browse Mode.



- Press **Left/Right/Up/Down** on the Front Jog Wheel to navigate through photos.
- Press **Volume Key** to zoom into/out of photos.

To view a photo on full screen, press Enter Navigation Key on a selected photo.

Viewing with Zoom Mode

Zoom Mode lets you zoom into desired photo size to view photos. From the thumbnail view, press **Zoom** to view as Zoom Mode.



- Press **Right** on the Front Jog Wheel to zoom into photos and **Left** to zoom out.
- Press **Up/Down** on the Front Jog Wheel to scroll through photos.

Note: When zooming into a full screen single photo, press 2, 4, 6, 8 to move the blue box within the guide photo.

Viewing Controls

To view with/without the scroll bar.

1. From the thumbnail view, press **Menu**.
2. Scroll down and select **Show**.
3. **Select/Deselect** Scroll Bar option.

To view photo properties.

1. From the thumbnail view, assign the desired photo by pressing the **Enter Navigation Key**.
2. Press **Menu** and select **Show** from the list.
3. Select **Properties**.

To use photo zoom.

1. From the thumbnail view, assign the desire photo by pressing the **Enter Navigation Key**.
2. Select **Zoom** and press **Left/Right** to zoom photo.



2

3. Viewing Photos

USER MANUAL

[PHOTO ACE VERSION 1.0]



To view album/folder

1. Press **Menu** from the thumbnail view and select **Show**.
2. **Deselect** Albums to view only Folder photos.
Deselect Folders to view only Album photos

To hide album/folder



1. From the thumbnail view, assign the desire album/folder with the select cursor.
2. Press **Enter Navigation Key** to hide/unhide.

You can edit photos to create your very own slideshows.

Viewing a Slideshow

1. From the thumbnail view, assign the album or photo you would like to view as a slideshow.
2. Select **Menu** and press **Slideshow**.

Slideshow Controls

You could control volume, choose your own background music, rotate photos and slide settings during the **slideshow**.



Press **ENTER** Navigation Key during the slideshow.



- **Volume:** Press **Up/Down** the Front Jog Wheel.
- **Background Music :** Select “music button” to assign songs.
- **Rotating Photos :** Select “rotating button” to rotate photo.
- **Slide Settings :** Select “pause button” to pause.
Select “stop button” to stop.
Select “rewind button” to rewind a slide.
Select “ff button” to fast-forward a slide.
Select “x button” to exit the slideshow.

3 SUPPORT

USER MANUAL

[PHOTO ACE VERSION 1.0]

Thank you for using TecAce PhotoAce.
If you have any questions or comments related to the product, please contact to our professional customer service team at support@teface.com.



2018 156th Ave NE
Bellevue WA 98007
www.TecAce.com
Copyright© 2007 TecAce Software
All right reserved.